

APPLYING FOR ENDORSEMENT®

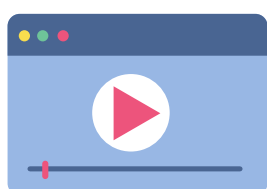
Complete each step before advancing to the next.



Explore the Endorsement® information page

[HTTPS://SCIMHA.ORG/ENDORSEMENT](https://scimha.org/endorsement)

This will introduce you to Endorsement® and outline the intention of the Endorsement®.



Watch Endorsement® 101 Webinar

[HTTPS://SCIMHA.ORG/ENDORSEMENT_WEBINARS](https://scimha.org/endorsement_webinars)

Upon completion of this webinar you will be able to connect SCIMHA's mission and activities to your work, explain how the IECMH Endorsement® is relevant to the infant and early childhood workforce (overall and in SC), differentiate between the different IECMH Endorsement® categories and Identify the steps necessary to begin the IECMH Endorsement® application process.



Email SCIMHA's Endorsement® Coordinitor

ENDORSEMENT@SCIMHA.ORG

Email Jean Cimino to schedule an individualized conversation to determine your Endorsement® category and to ask your specific questions!



SOUTH CAROLINA
Infant Mental
Health Association

Become a SCIMHA Member

[HTTPS://SCIMHA.ORG/JOIN-US](https://scimha.org/join-us)

Endorsement® applicants must have a current membership with SCIMHA. Members receive access to exclusive benefits. Membership is renewed annually.



Register on the Endorsement® Application System (EASy)

[HTTPS://EASY.MI-AIMH.ORG/SCIMHA](https://easy.mi-aimh.org/scimha)

Registering on EASy involves submitting preliminary information and paying the EASy registration fee with a credit card via PayPal. When registering on EASy, it is strongly recommended that you register using a personal email address (e.g., gmail, yahoo, hotmail, etc). Employer email servers often block messages sent by the EASy system.

CONGRATULATIONS!
YOU HAVE BEGUN YOUR ENDORSEMENT® APPLICATION!

RELATED TO ENDORSEMENT®

Here are some online professional development opportunities to get you started!

New to IECMH? Start here!

THESE ONLINE RESOURCES PROVIDE AN OVERVIEW AND INTRODUCTION TO THE IECMH FIELD.

[Harvard Center for the Developing Child: Early Childhood Mental Health](#)
[Harvard Center for the Developing Child: Impact of Early Adversity on Children's Development](#)
[Harvard Center for the Developing Child: Child Development Core Study](#)
[IMH Promotion: Infant Mental Health: The Basics](#)
[Zero To Three](#)
[First 3 Years Tx: Infant and Early Childhood Mental Health Module](#)

Professional Development Aligned with the IECMH Competencies:

THESE LINKS PROVIDE ACCESS TO VARIOUS TRAININGS THAT HAVE BEEN APPROVED FOR ENDORSEMENT® AND ALIGN WITH THE COMPETENCIES.

[Alliance for the Advancement of Infant Mental Health: Online Trainings](#)
[First 3 Years: Online Courses](#)
[NC Early Learning Network: Training Modules](#)
[Early EdU Alliance: Media, Modules and More](#)

Self-Care Related Resources

EXPLORE THESE LINKS FOR AN INTRODUCTION TO MINDFULNESS AND TO BEGIN YOUR OWN MINDFULNESS PRACTICE.

[Mindful Self-Compassion Webinar Series](#)
[Getting Started with Mindfulness: A Toolkit for Early Childhood Organizations](#)
[Mindfulness Breaks: A Weekly Series for Self-Care](#)

COVID-19 Related Professional Resources

THESE SITES HAVE PULLED TOGETHER THE MOST RELEVANT RESOURCES RELATED TO THE COVID-19 PANDEMIC. THESE ARE UPDATED AS NEW RESOURCES BECOME AVAILABLE.

[Alliance for the Advancement of Infant Mental Health: COVID-19 Resources](#)
[Zero to Three: Coronavirus Resources for Early Childhood Professionals](#)
[The Brain Architects Podcast: COVID-19 Special Edition: A Different World](#)
[The Brain Architects Podcast: COVID-19 Special Edition: Self-Care Isn't Selfish](#)



SOUTH CAROLINA Infant Mental Health Association

Join SCIMHA and have access to our Third Thursday professional development webinars!

*TIME SPENT AT SCIMHA EVENTS COUNTS TOWARD IMHE® AND/OR ECMHE® TRAINING OR RENEWAL REQUIREMENTS. WE RECOMMEND CONSULTING THE COMPETENCY GUIDELINES ASSOCIATED WITH YOUR ENDORSEMENT® CATEGORY TO CONFIRM.

